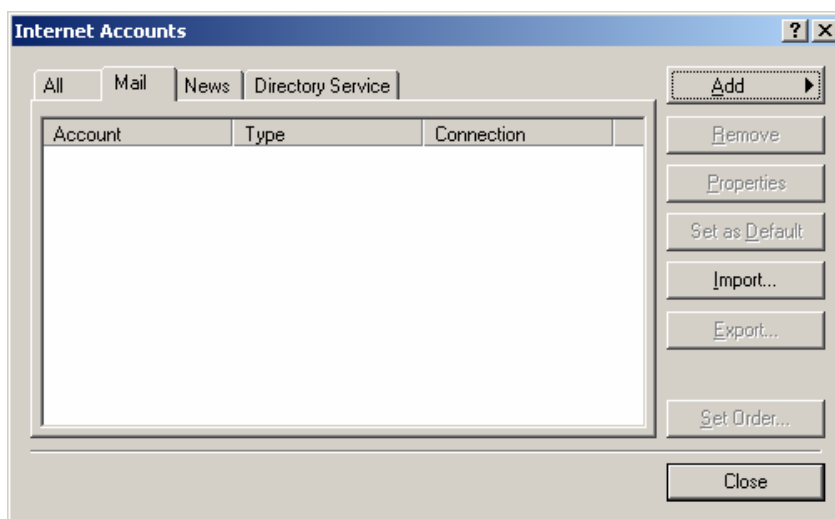


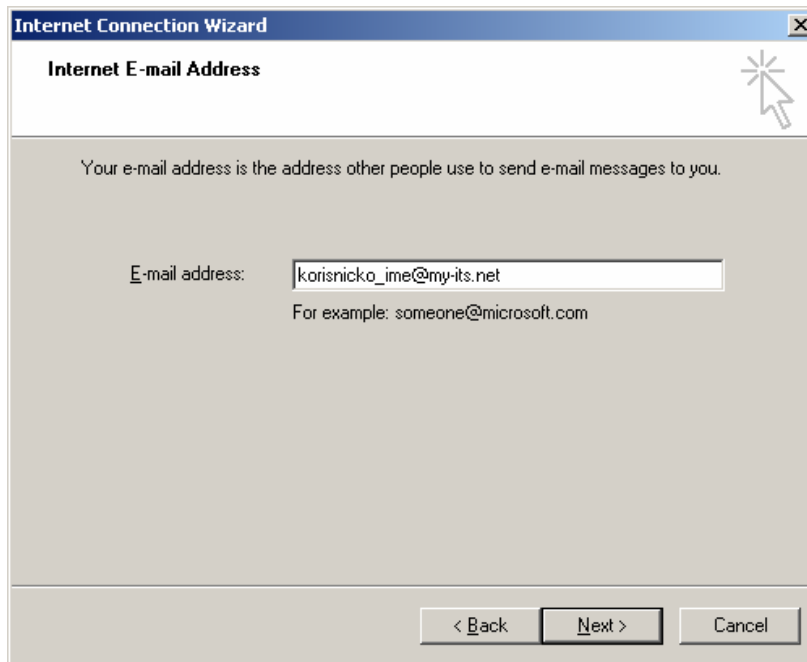
1. Pokrenite E-mail program Outlook Express
2. U meniju kliknite na opciju Tools pa zatim na Accounts...
3. U prozoru Internet Accounts pređite na karticu Mail, kliknite na taster Add pa Mail...



4. Pojaviće se Internet Connection Wizard, unesite Vaše ime, kliknite na Next.

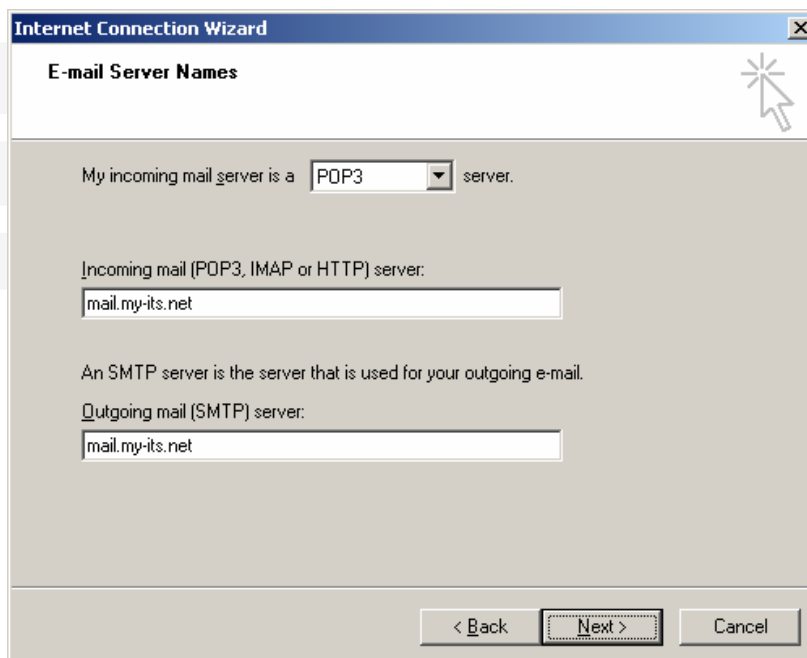


5. Unesite Vašu E-mail adresu korisnicko_ime@my-its.net, kliknite na Next.



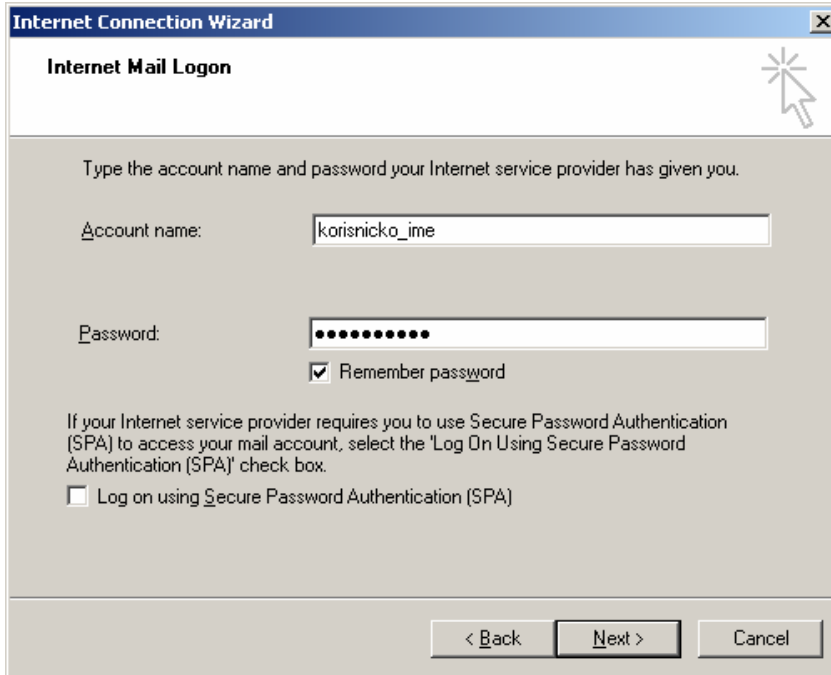
The screenshot shows the 'Internet Connection Wizard' window with the 'Internet E-mail Address' step selected. The window title is 'Internet Connection Wizard'. The main heading is 'Internet E-mail Address'. Below the heading, there is a text box with the instruction: 'Your e-mail address is the address other people use to send e-mail messages to you.' Below this, there is a label 'E-mail address:' followed by a text input field containing 'korisnicko_ime@my-its.net'. Below the input field, there is an example: 'For example: someone@microsoft.com'. At the bottom of the window, there are three buttons: '< Back', 'Next >', and 'Cancel'.

6. Za My incoming mail server izaberite POP3, u polja Incoming mail (POP3, IMAP, HTTP) server i Outgoing mail (SMTP) server unesite mail.my-its.net, kliknite Next.



The screenshot shows the 'Internet Connection Wizard' window with the 'E-mail Server Names' step selected. The window title is 'Internet Connection Wizard'. The main heading is 'E-mail Server Names'. Below the heading, there is a text box with the instruction: 'My incoming mail server is a POP3 server.' Below this, there is a dropdown menu with 'POP3' selected. Below the dropdown, there is a label 'Incoming mail (POP3, IMAP or HTTP) server:' followed by a text input field containing 'mail.my-its.net'. Below this, there is a label 'An SMTP server is the server that is used for your outgoing e-mail.' Below this, there is a label 'Outgoing mail (SMTP) server:' followed by a text input field containing 'mail.my-its.net'. At the bottom of the window, there are three buttons: '< Back', 'Next >', and 'Cancel'.

7. U polje Account name unesite Vaše korisničko ime korisnicko_ime@my-its.net, u polje Password unesite Vašu lozinku, kliknite Next.



Internet Connection Wizard

Internet Mail Logon

Type the account name and password your Internet service provider has given you.

Account name:

Password:

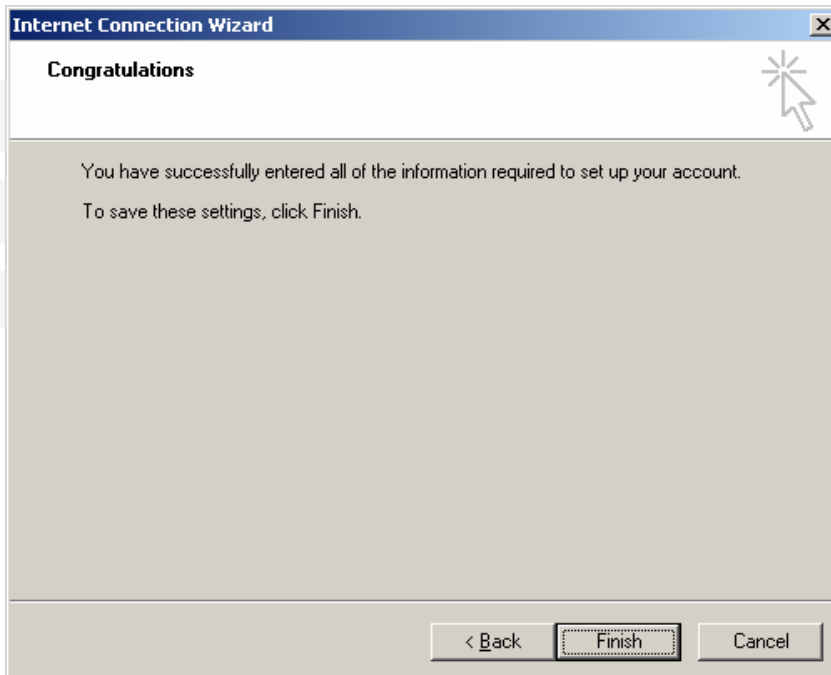
Remember password

If your Internet service provider requires you to use Secure Password Authentication (SPA) to access your mail account, select the 'Log On Using Secure Password Authentication (SPA)' check box.

Log on using Secure Password Authentication (SPA)

< Back Next > Cancel

8. Nalazite se u završnom prozoru za setovanje maila, kliknite Finish.



Internet Connection Wizard

Congratulations

You have successfully entered all of the information required to set up your account.

To save these settings, click Finish.

< Back Finish Cancel

Kada je Internet mail account kreiran možete primati i slati E-mail poruke preko my-its.net.